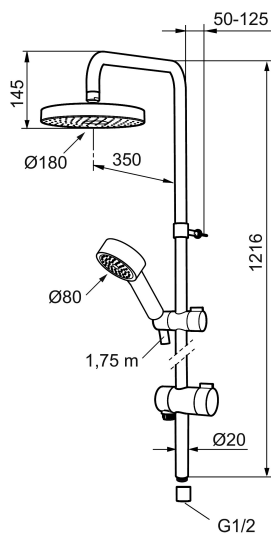




Unique characteristics



## MORA MMIX S5 shower system

Mora MMIX combines a softly shaped, ergonomic exterior with an energy-efficient interior. It has a geometric design with softly billowing curves, and the whole product line conveys a timeless, uniform style. Mora MMIX was developed according to our unique EcoSafe™ environmental concept for low energy consumption and long-term environmental care.

Article number: 130313 Flow 3 bar: 12.0 l/m

Description: Chrome

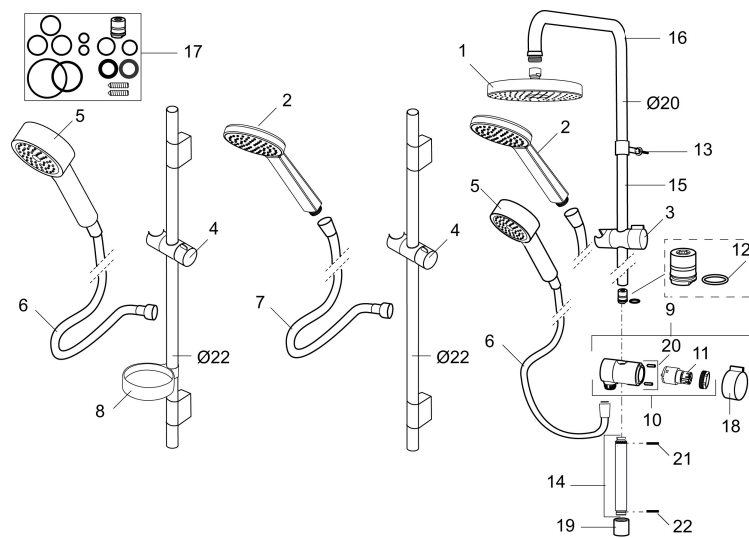
- Diverter with ceramic cartridge
- Shower hose in metal, PVC- and BPA-free
- With Easy-Clean anti-limescale system
- Shower bar can be shortened if required
- Connection with G1/2
- Diverter can be mounted with lever pointing in chosen direction
- Eco (energy and water saving hand shower 9 l/min, shower head 12 l/min)

PRODUCT DESCRIPTION

# MORA MMIX S5 shower system

Mora MMIX combines a softly shaped, ergonomic exterior with an energy-efficient interior. It has a geometric design with softly billowing curves, and the whole product line conveys a timeless, uniform style. Mora MMIX was developed according to our unique EcoSafe™ environmental concept for low energy consumption and long-term environmental care.

Article number: 130313



## Sparepartlist

| NO. | ART NO.   | RSK     | DESCRIPTION  |
|-----|-----------|---------|--|
|     | 139912.AE | 8221715 | Distrance ring Ø18, Ø20 and Ø22 mm, for soap dish 409416 |
| 1   | 209544    | 8180716 | Shower head for S5, 180 mm                               |
| 1   | 209545    | 8180717 | Shower head for S6, 180 mm                               |
| 2   | 130374    | 8275308 | Hand shower for S6                                       |
| 3   | 409418.AE | 8284740 | Slider   |
| 4   | 130363.AE | 8762730 | Slider   |
| 5   | 130361    | 8199196 | Hand shower  |
| 6   | S600310   | 8239707 | Shower hose in metal, 1750 mm                            |
| 7   | 130365.AE | 8251937 | Shower hose (silver) 1750 mm                             |
| 8   | 409416    | 8185645 | Soap dish  |
| 9   | 409422    | 8541659 | Diverter, complete                                       |
| 10  | 409430.AE | 8541683 | Diverter   |
| 11  | S600321   | 8239708 | Cartridge for diverter                                   |
| 12  | 639173.AE | 8295314 | Gasket (2 pcs)   |
| 13  | 139906.AE | 8180378 | Clip for shower bar 20 mm                                |

| NO. | ART NO.   | RSK     | DESCRIPTION                      |
|-----|-----------|---------|----------------------------------|
| 14  | 209549.AE | 8180946 | Connecting pipe                  |
| 15  | 209548.AE | 8180944 | Lower bar                        |
| 16  | 209550.AE | 8180947 | Upper bar for S5                 |
| 17  | 409425.AE | 8346925 | Spare bag for Mora Shower System |
| 18  | 409443.AE | 8295326 | Handle for diverter              |
| 19  | 209291.AE | 8295321 | Transition nipple G1/2 - M18x1   |
| 20  | 139812.AE | 8295323 | Stop screw M5x20                 |
| 21  | 309246.AE | 8295312 | O-ring (13,1 x 1,6)              |
| 22  | 609029.AE | 8295315 | O-ring (16,1 x 1,6)              |