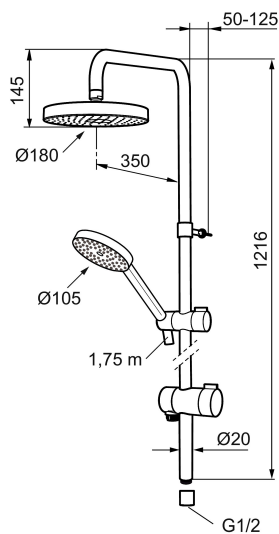




Unique characteristics



## MORA MMIX S6 shower system

Mora MMIX combines a softly shaped, ergonomic exterior with an energy-efficient interior. It has a geometric design with softly billowing curves, and the whole product line conveys a timeless, uniform style. Mora MMIX was developed according to our unique EcoSafe™ environmental concept for low energy consumption and long-term environmental care.

Article number: 130315

Description: Chrome

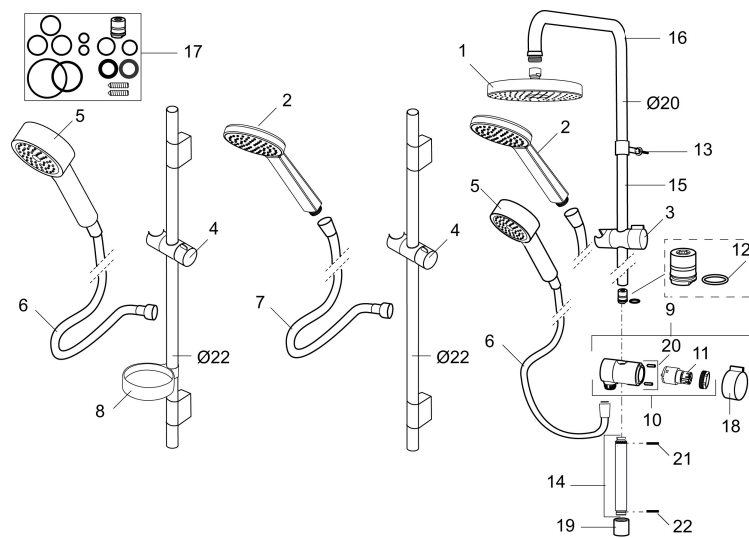
- Diverter with ceramic cartridge
- Shower hose in metal, PVC- and BPA-free
- With Easy-Clean anti-limescale system
- Shower bar can be shortened if required
- Connection with G1/2
- Diverter can be mounted with lever pointing in chosen direction
- Eco (energy and water saving hand shower 9 l/min, shower head 12 l/min)

PRODUCT DESCRIPTION

# MORA MMIX S6 shower system

Mora MMIX combines a softly shaped, ergonomic exterior with an energy-efficient interior. It has a geometric design with softly billowing curves, and the whole product line conveys a timeless, uniform style. Mora MMIX was developed according to our unique EcoSafe™ environmental concept for low energy consumption and long-term environmental care.

Article number: 130315



## Sparepartlist

NO.	ART NO.	RSK	DESCRIPTION
	139912.AE	8221715	Distrance ring Ø18, Ø20 and Ø22 mm, for soap dish 409416
1	209544	8180716	Shower head for S5, 180 mm
1	209545	8180717	Shower head for S6, 180 mm
2	130374	8275308	Hand shower for S6
3	409418.AE	8284740	Slider
4	130363.AE	8762730	Slider
5	130361	8199196	Hand shower
6	S600310	8239707	Shower hose in metal, 1750 mm
7	130365.AE	8251937	Shower hose (silver) 1750 mm
8	409416	8185645	Soap dish
9	409422	8541659	Diverter, complete
10	409430.AE	8541683	Diverter
11	S600321	8239708	Cartridge for diverter
12	639173.AE	8295314	Gasket (2 pcs)
13	139906.AE	8180378	Clip for shower bar 20 mm

NO.	ART NO.	RSK	DESCRIPTION
14	209549.AE	8180946	Connecting pipe
15	209548.AE	8180944	Lower bar
16	209550.AE	8180947	Upper bar for S5
17	409425.AE	8346925	Spare bag for Mora Shower System
18	409443.AE	8295326	Handle for diverter
19	209291.AE	8295321	Transition nipple G1/2 - M18x1
20	139812.AE	8295323	Stop screw M5x20
21	309246.AE	8295312	O-ring (13,1 x 1,6)
22	609029.AE	8295315	O-ring (16,1 x 1,6)